

...❖ Planetary Cutting Technology

RA and RA H

Pipe Cutting and Beveling Machines
RA 2, RA 4, RA 6, RA 8 and RA 12

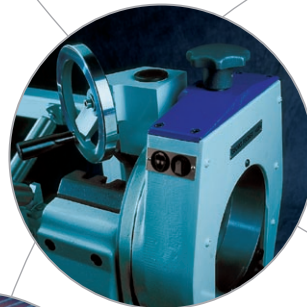
Perform economical cutting and beveling with technology made by Orbitalum Tools!

Advantages:

- Multiple point clamping
- Fast adjustment of dimensions
- Regulated cutting speed
- Optimal tool contact
- Working direction from the inside towards the outside
- Fast tool replacement

Your benefits:

- Square, burr-free and deformation-free pipe end
- Cold machining process
- Cutting in seconds
- Simultaneous or separate cutting and beveling
- Increased productivity
- Improved cutting quality
- Increased service life of tools



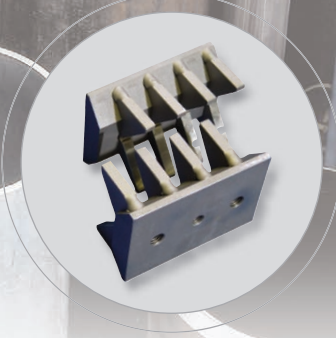
...❖ also available with automatic or manual feed module
AVM/MVM



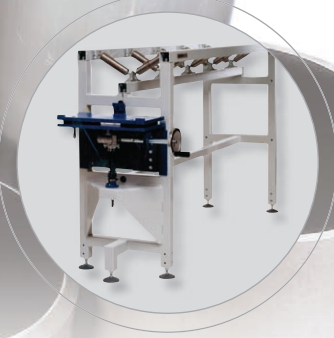
A wide range of **saw blades and bevel cutter** are especially designed for our pipe cutters for highest requirements and longest service life.



High-performance lubricants for pipe cutting and beveling to increase the saw blade life-time. Synthetic saw blade lubricating compound **GF TOP**, Tube, 180 g: Code 790 060 228. Saw blade lubricating compound **ROCOL**, Tube, 150 ml: Code 790 041 016.



Special stainless steel clamping jaws for RA 2, RA 21 S: Code 790 041 323. For RA 4: Code 790 042 201. **Aluminum clamping jaws** for RA 4 and RA 41 Plus: Code 790 046 250. Customised **aluminum clamping shells** for RA 6, RA 8 and RA 12 for deformation-free clamping of thin-walled tubes.



Very sturdy and stable pipe feeder: feeds accurately long and heavy pipes into RA machines. Base unit: Code 790 068 051. Extension unit: Code 790 068 061

Pipe Cutting and Beveling Machines

Technical data	RA 2 (H)	RA 4 (H)	RA 6 (H)	RA 8 (H)	RA 12 (H)
Weight [kg]*	45 (47)	78 (80)	95 (97)	115 (117)	135 (137)
Power [kW]	1.6	1.6	1.6	1.6	1.6
Protection class	Totally insulated in accordance with class II, DIN VDE 0740				
Built-in electronic speed regulation with speed stabilisation [rpm]*	150 – 270 (40 – 70)	150 – 270 (40 – 70)	150 – 270 (40 – 70)	150 – 270 (40 – 70)	150 – 270 (40 – 70)
Versions	200 – 240 V, 50/60 Hz or 100 – 120 V, 50/60 Hz. Pneumatic drive only on request.				
Vibration level according to EN 28662, part 1 [m/s ²]	2.5	2.5	2.5	2.5	2.5
Noise level in the workplace approx. [dB (A)]	75	75	75	75	75
Working range	RA 2 (H)	RA 4 (H)	RA 6 (H)	RA 8 (H)	RA 12 (H)
Pipe OD [mm]	12 – 63	13 – 120	44 – 182	124 – 230	180 – 325
Pipe OD [inch]	0.472 – 2.480	0.518 – 4.724	1.732 – 7.165	4.882 – 9.055	7.087 – 12.795
Wall thickness, depends on material [mm]**	2 – 5.5	2 – 7	2 – 10	2 – 10	2 – 10
Wall thickness, depends on material [inch]**	0.079 – 0.217	0.079 – 0.276	0.079 – 0.394	0.079 – 0.394	0.079 – 0.394
Pipe ID min. (saw blade-Ø 63 mm) [mm]	7	21	76	137	190
Pipe ID min. (saw blade-Ø 2.480 inch) [inch]	0.276	0.827	2.992	5.394	7.480
Pipe ID min. (saw blade-Ø 68 mm) [mm]	2	16	71	132	185
Pipe ID min. (saw blade-Ø 2.677 inch) [inch]	0.079	0.630	2.795	5.197	7.283
Pipe ID min. (saw blade-Ø 80 mm) [mm]	–	4	59	120	173
Pipe ID min. (saw blade-Ø 3.150 inch) [inch]	–	0.157	2.329	4.724	6.811
Pipe ID min. (saw blade-Ø 100 mm) [mm]	–	–	39	–	–
Pipe ID min. (saw blade-Ø 3.937 inch) [inch]	–	–	1.535	–	–

* Values in brackets for RA H (= with intermediate gear)

** Depending on the wall thickness special clamping shells for thin-walled tubes are required (accessory)

The technical data are not binding. They are not warranted characteristics and are subject to change. Please consult our general conditions of supply.

Info-Hotline: +49 (0) 77 31 792-787 up to 789



© Orbitalum Tools GmbH (10.2007) / An ITW Company
 Freibühlstraße 19, 78224 Singen, Deutschland
 Tel. +49 (0) 77 31 792-0, Fax +49 (0) 77 31 792-524
 www.orbitalum.com, tools@orbitalum.com

ehemals / formerly known as Georg Fischer Rohrverbindungstechnik
+GF+

Code 790 700 202_01