

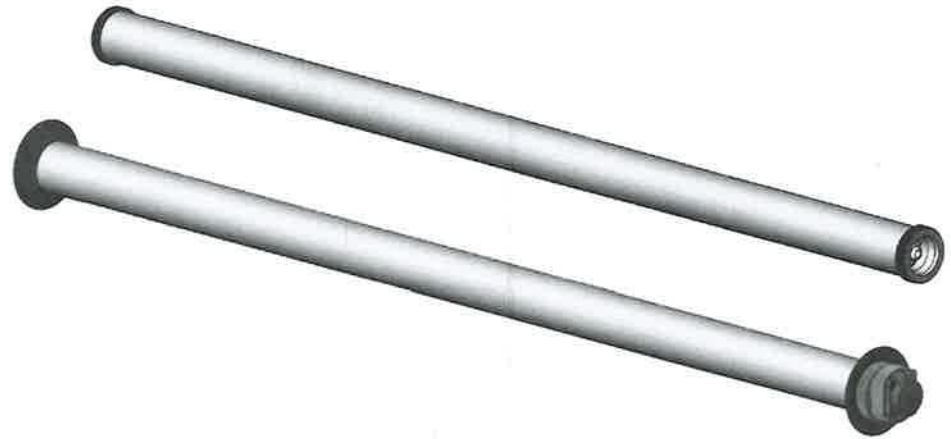
	L1	L2
LED 12W	345 mm	390 mm
LED 23W	625 mm	670 mm
LED 33W	905 mm	950 mm
LED 46W	1185 mm	1230 mm
LED 56W	1465 mm	1510 mm
T5 27W / 38W	615 mm	660 mm
T5 45W / 48W	915 mm	960 mm
T5 54W / 62W	1215 mm	1260 mm
T5 85W / 78W	1515 mm	1560 mm

# INSTRUCTION

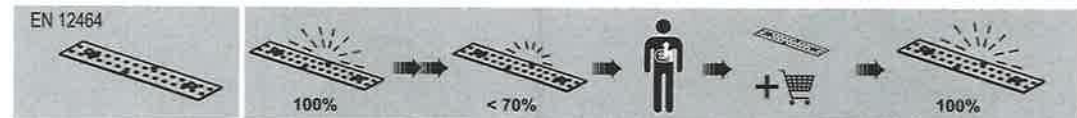
## Schutzrohrleuchte / Tube light

663-0303  
26/14

341612/0032



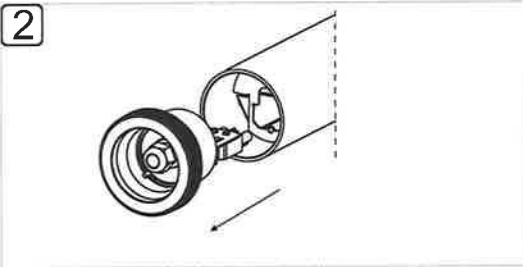
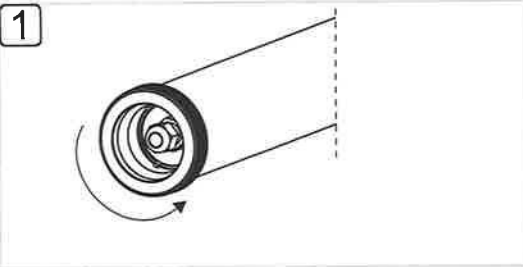
 Spannung voltage	230 V~ 0/50-60 Hz			
	Schutzart protection class	IP 44	IP 54	IP 67
	Schutzklasse Type of protection	SKL I	SKL II	



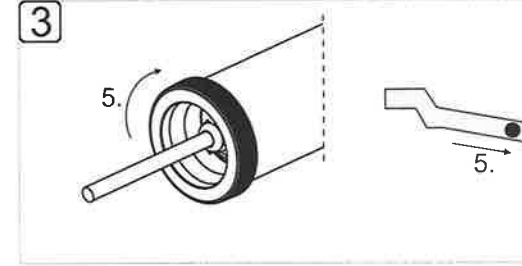
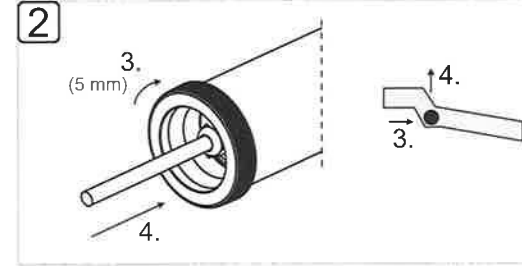
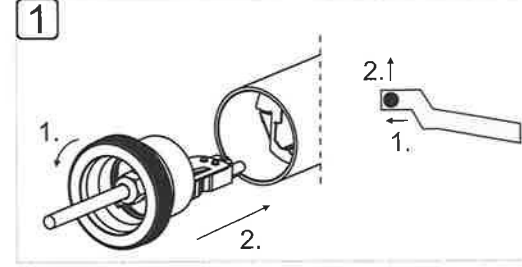
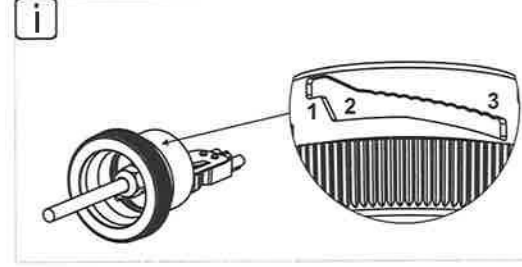
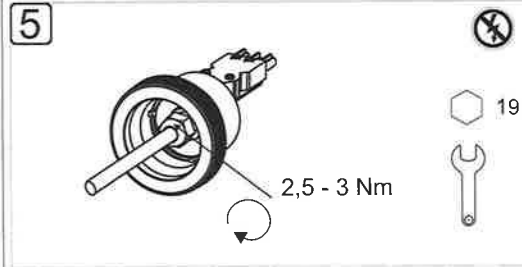
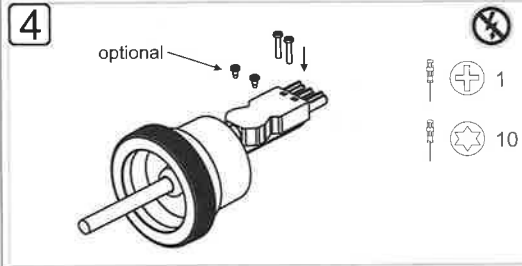
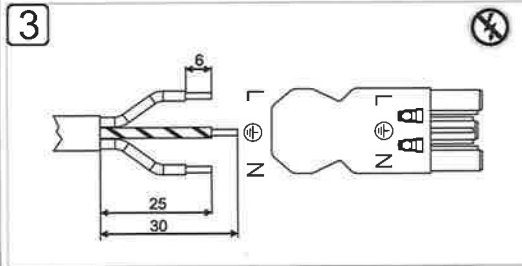
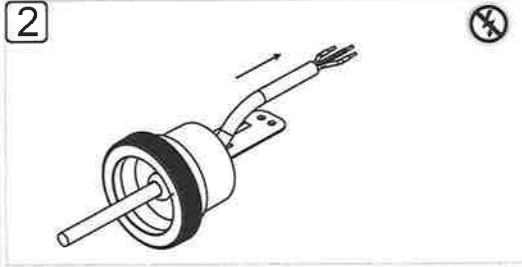
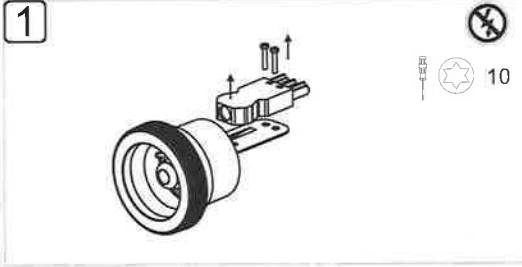
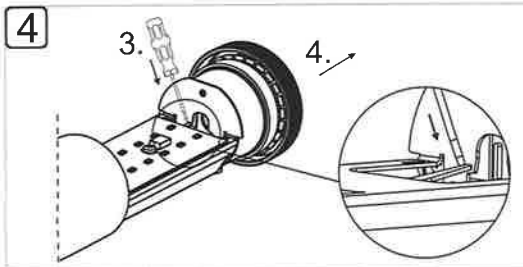
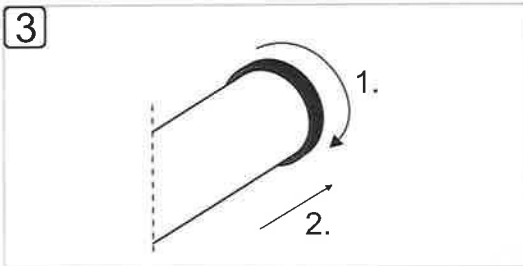
ÖFFNEN / OPEN

INSTALLATION / INSTALLATION

SCHLIESSEN / CLOSE



ÖFFNEN 2. Seite für Durchverdrahtung  
OPEN 2nd side for through-wiring



Innenliegender, nicht sichtbarer Ver-  
schlussmechanismus /  
Inside locking mechanism, not visible

1. Endkappe bis zum Anschlag drehen /  
Turn end cap until it stops
2. Endkappe vollständig einführen /  
Fully insert end cap

3. Endkappe 5mm im Uhrzeigersinn drehen /  
Turn end cap 5mm clockwise
4. Dichtung anpressen / Press down seal

5. Endkappe im Uhrzeigersinn fest verschließen /  
close end cap clockwise tightly