

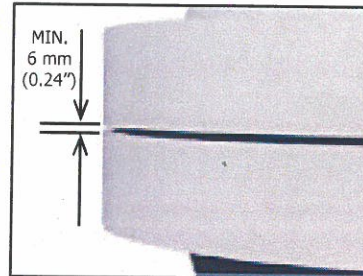


(ST) S/N:



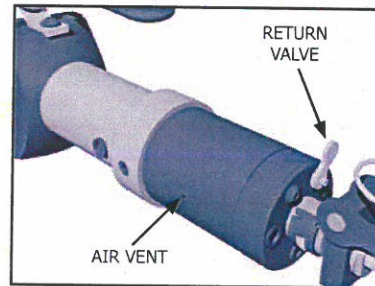
7.2 INSTALLATION AND OPERATION

1. Determine the flange joint access gap - a minimum access gap of 6 mm (0.24") is required.

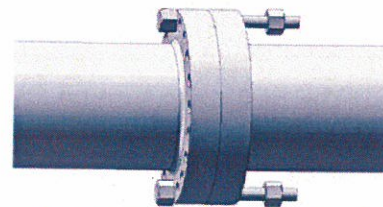


2. Before installing the wedge, ensure that it is fully retracted and tighten the return valve in a clockwise direction to the closed position.

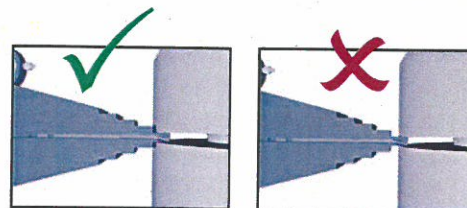
Also ensure the air vent is not obstructed in any way as this will result in a vacuum within the system and the wedge will not advance.



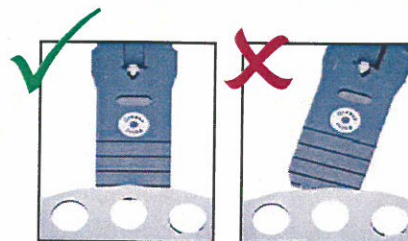
Before attaching the tool ensure at least two flange bolts remain in place 180 degrees apart with nuts removed. These bolts will reduce lateral flange movement during flange spreading.



3. Insert the wedge into the joint until the heel of the step is in contact with the outer surface of the joint.



Ensure that the full step is used and that the jaw is positioned centrally.

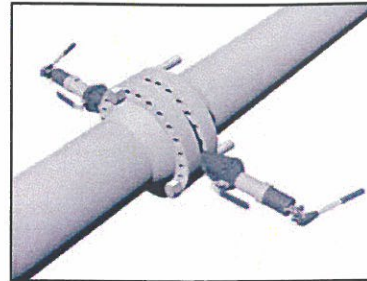


Inserting the wedge incorrectly may result in tool breakage and render the warranty void.

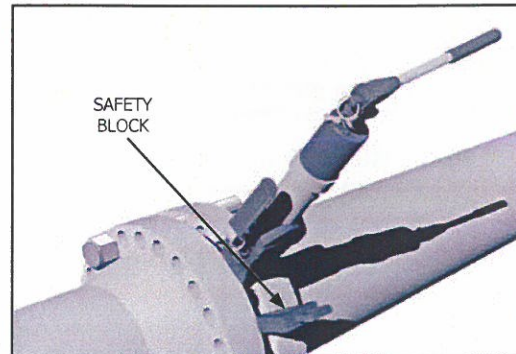


4. It is strongly recommended that two SW14.5TI wedges be used on the flange joint positioned 180 degrees apart.

Prime each pump individually ensuring that the flange joint opens evenly.



5. When the joint has been opened to the desired spreading distance, or the maximum spreading distance on the current step is reached, the safety block should be inserted into the joint and the pressure released back onto it.



6. The wedge can then be re-inserted on its next step and the joint opened further.

7. Once the joint has been spread and all work completed, the wedges should be removed by reversing steps 4 - 6. Release the wedges by turning the return valve anti-clockwise. Ensure the wedges are released evenly until completely closed.

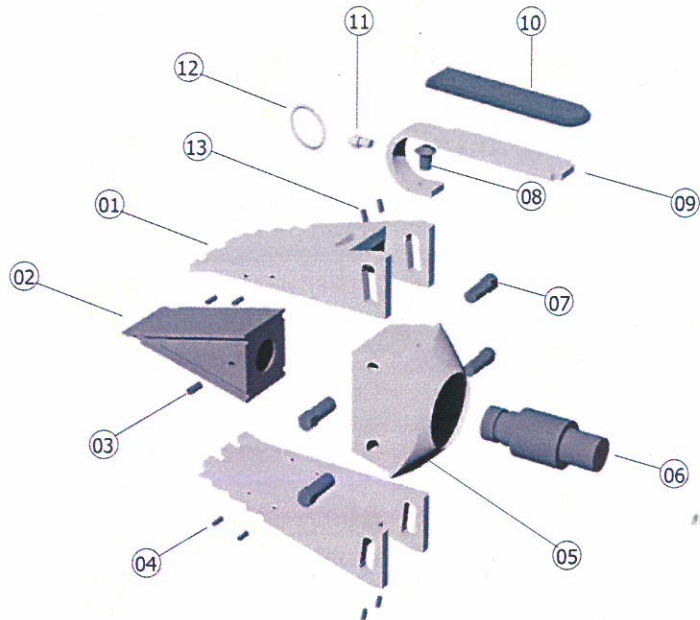
Care should be taken not to drop any of the component parts when removing them from the flange joint. This action will prevent injuries to either the operator's lower limbs, or to passers-by.



7.3 PARTS LISTS

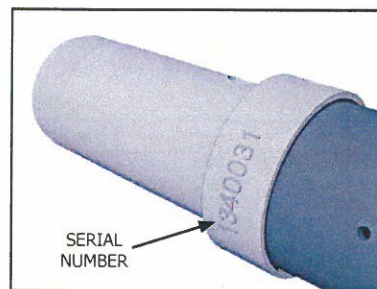
SW14.5TI WEDGEHEAD

ITEM	PART No.	DESCRIPTION	QUANTITY
01	300203-02	JAWS	01 set of 2
02	300101-01	WEDGE	01 each
03	301301-01	GRUB SCREW	01 each
04	301201-08	ROLL PINS	01 set of 8
05	301102-01	BODY	01 each
06	300301-01	CONNECTOR/PUSH ROD	01 each
07	300501-04	SLIDE PINS	01 set of 4
08	401801-01	RETAINING SCREW	01 each
09	308201-01	HANDLE	01 each
10	312301-01	HANDLE SLEEVE	01 each
11	310601-01	GREASE NIPPLE	01 each
12	311601-02	RING	01 set of 2
13	300401-04	GRUB SCREWS	01 set of 4



INTEGRAL HYDRAULIC PUMP/CYLINDER

A variety of pump/cylinder units are supplied with the SW14.5TI kit. The pump/cylinder unit supplied with the kit being used can be determined by the serial number etched into the pump body.

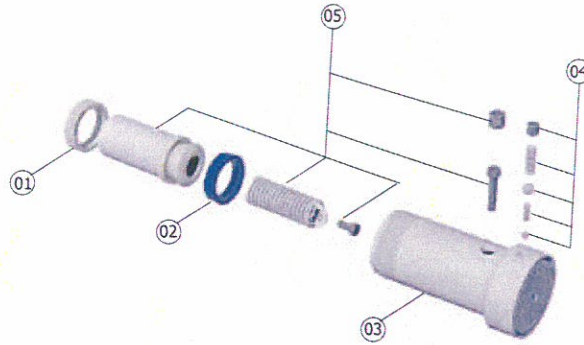


Serial number	Pump/cylinder type
1340000 to 1340031	Single speed
1340032 to 1340292	Dual speed
1340293 onwards	Dual or single speed with upgraded piston rod and seal

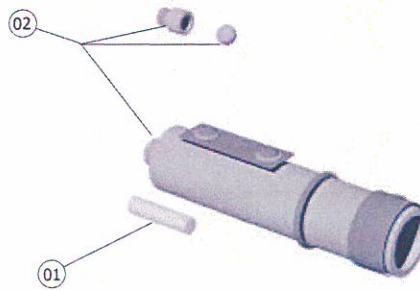


SINGLE SPEED PUMP/CYLINDER (serial no. 1340000 to 1340031)

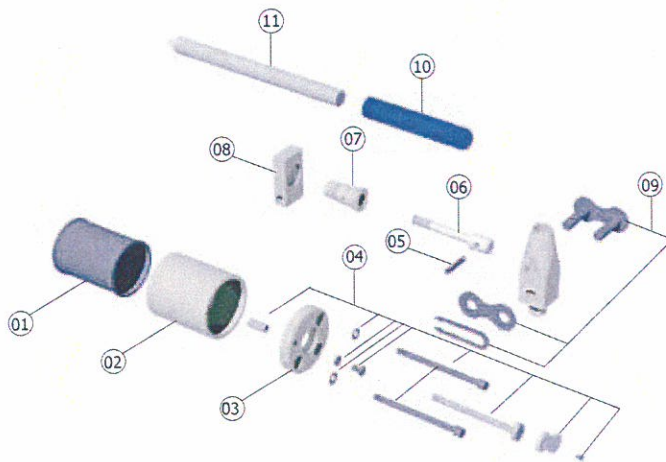
ITEM	PART NO	DESCRIPTION	QUANTITY
01	303401-01	BEARING	01
02	303801-01	SEAL	01
03	303901-01	PUMP BODY	01
04	310901-01	OUTLET & INTERMEDIATE CHECK VALVE (KIT)	01 kit
05	303502-01	PISTON ROD / SPRING ASSY (KIT)	01 kit



ITEM	PART NO	DESCRIPTION	QUANTITY
01	304001-01	FILTER	01 ea
02	310701-01	BARREL RELIEF VALVE ASSY	01 kit



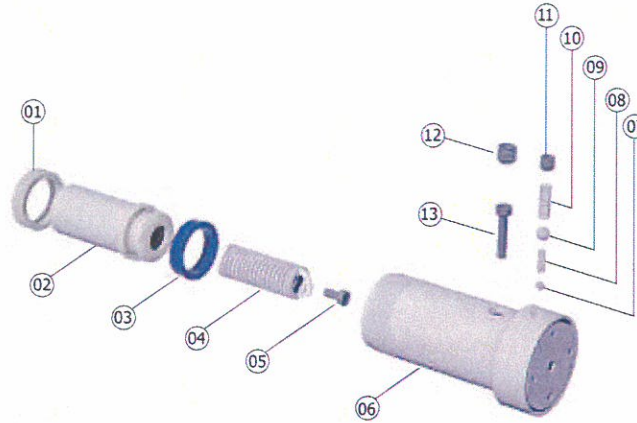
ITEM	PART NO	DESCRIPTION	QUANTITY
01	304501-01	BELLOWS	01 ea
02	304601-01	RESERVOIR	01 ea
03	304801-01	END CAP	01 ea
04	311001-01	SERVICE KIT (END CAP)	01 kit
05	306001-01	SPRING PIN	01 ea
06	306101-01	PISTON ROD	01 ea
07	306201-01	BEARING	01 ea
08	306301-01	PIVOT PLATE	01 ea
09	305701-01	LINK	01 ea
10	306501-01	HANDLE SLEEVE	01 ea
11	306401-01	HANDLE	01 ea



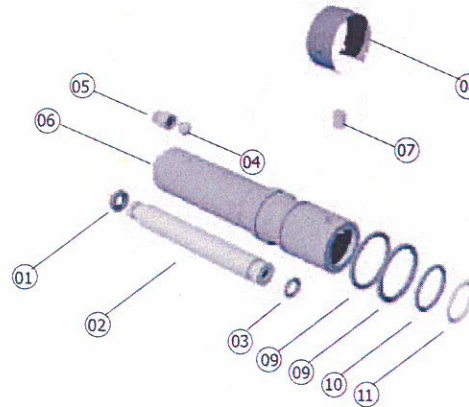


DUAL SPEED PUMP/CYLINDER (serial no. 1340032 to 1340292)

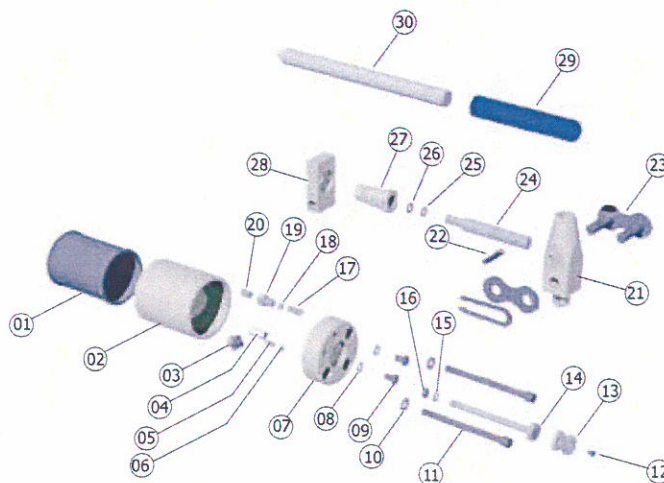
ITEM	PART NO.	DESCRIPTION	QUANTITY
01	303401-01	BEARING	01 ea
02	303501-01	PISTON ROD	01 ea
03	303801-01	SEAL	01 ea
04	303601-01	SPRING	01 ea
05	303701-01	SKT CAP SCREW	01 ea
06	303901-01	PUMP BODY	01 ea
07	307301-01	BALL	01 ea
08	314901-01	SPRING	01 ea
09	307501-01	BALL	01 ea
10	307601-01	SPRING	01 ea
11	307701-01	SOCKET PLUG	01 ea
12	307801-01	SOCKET PLUG	01 ea
13	307901-01	SKT CAP SCREW	01 ea



ITEM	PART NO	DESCRIPTION	QUANTITY
01	308401-01	"O" RING	01 ea
02	308501-01	CONNECTOR TUBE	01 ea
03	308601-01	"O" RING	01 ea
04	306601-01	BALL	01 ea
05	306901-01	RELEASE BODY	01 ea
06	310801-01	BARREL RELIEF VALVE ASSY	01 ea
07	306701-01	DOWAL	01 ea
08	306802-01	CLIP	01 ea
09	308701-02	"O" RING	01 set of 2
10	308801-01	"O" RING	01 ea
11	308901-01	BACK UP RING	01 ea



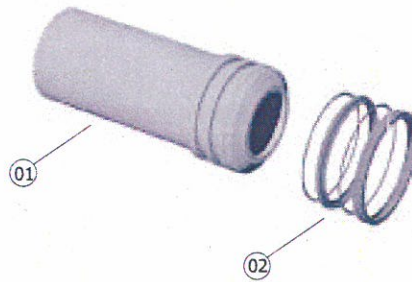
ITEM	PART NO	DESCRIPTION	QUANTITY
01	304501-01	BELLOWS	01 ea
02	304601-01	RESERVOIR	01 ea
03	309101-01	ADJUSTING SCREW	01 ea
04	304701-01	RELEASE SLEEVE	01 ea
05	309001-01	SPRING	01 ea
06	306601-01	BALL	01 ea
07	309201-01	END CAP	01 ea
08	305001-02	BONDED WASHER	01 set of 2
09	305101-02	SKT BTN SCREW	01 set of 2
10	305201-02	COPPER WASHER	01 set of 2
11	309301-02	SKT CAP SCREW	01 set of 2
12	305601-01	RETAINING SCREW	01 ea
13	305501-01	RELEASE LEVER	01 ea
14	309401-01	RELEASE SCREW	01 ea
15	304901-01	WASHER	01 ea
16	309501-01	"O"RING	01 ea
17	309601-01	SPRING	01 ea
18	307301-01	BALL	01 ea
19	309701-01	INLET FITTING	01 ea
20	309801-01	FILTER ELEMENT	01 ea
21	305801-01	CLEVIS	01 ea
22	306001-01	SPRING PIN	01 ea
23	305701-01	LINK	01 ea
24	309901-01	PISTON ROD	01 ea
25	310101-01	BACK-UP RING	01 ea
26	308601-01	"O" RING	01 ea
27	310201-01	BEARING	01 ea
28	306301-01	PIVOT PLATE	01 ea
29	306501-01	HANDLE SLEEVE	01 ea
30	306401-01	HANDLE	01 ea





PUMP/CYLINDER WITH UPGRADED PISTON ROD AND SEAL
(serial no. 1340293 onwards)

ITEM	PART NO	DESCRIPTION	QUANTITY
01	303503-01	PISTON ROD	01 ea
02	303802-01	SEAL	01 ea



7.4 WEIGHTS AND DIMENSIONS

SW14.5TI Wedgehead with Integral Hydraulic Pump/Cylinder
Carry-Case with Protective Foam Inserts

= 8.5 kg (18.7 lbs)
= 6.0 kg (13.2 lbs)

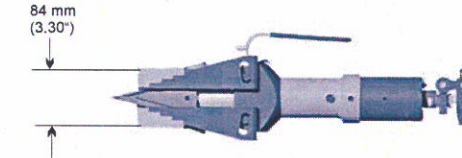
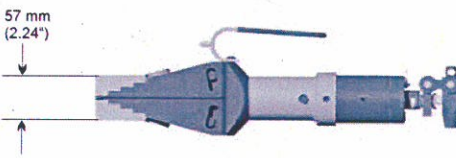
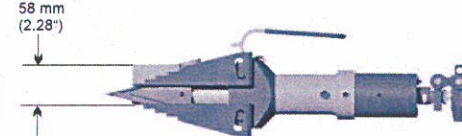
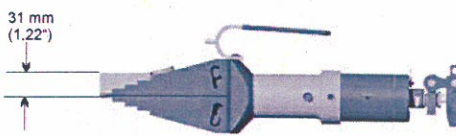
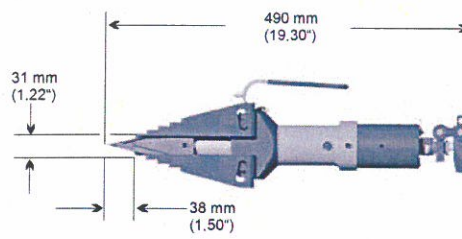
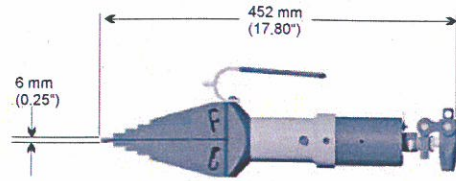
GROSS KIT WEIGHT

= 17.0 kg (37.5 lbs)

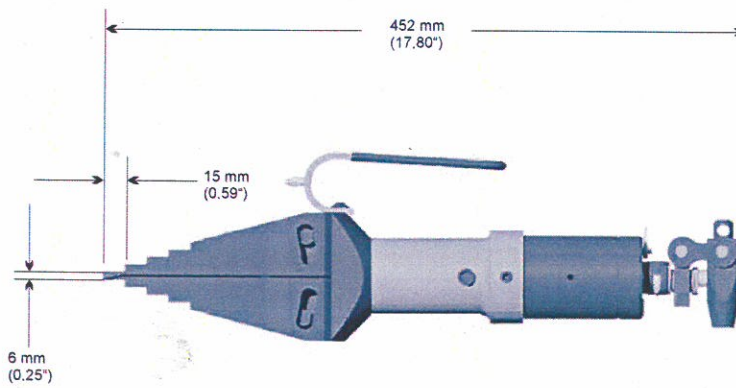


MINIMUM EXTENSIONS

MAXIMUM EXTENSIONS



OVERALL DIMENSIONS



SAFETY BLOCK DIMENSIONS

