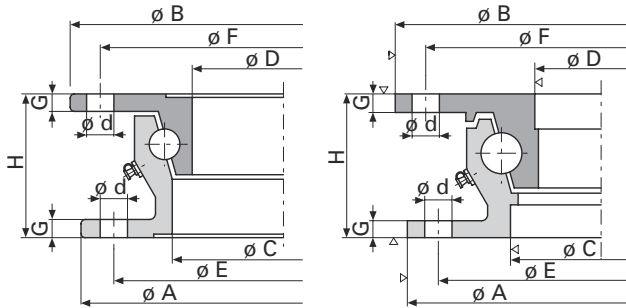
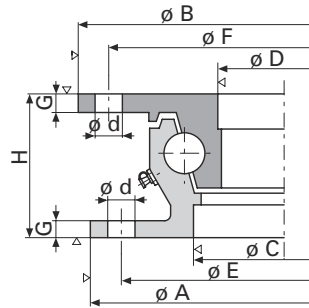


# Kugellenkränze KLK HE und SO

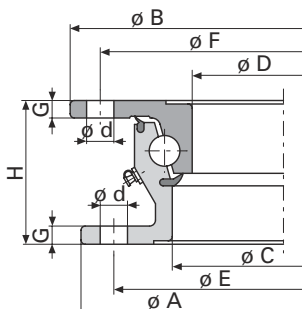
## Technische Daten



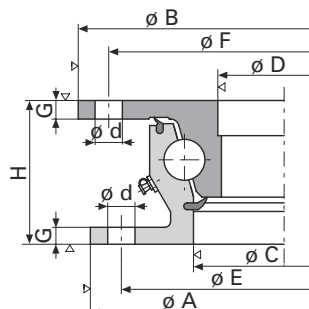
**KLK HE Standard**



**KLK SO Standard**



**KLK HE wartungsarm**



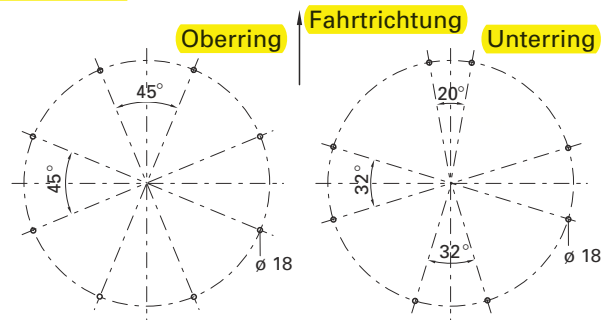
**KLK SO wartungsarm**

▽ = Kontur bearbeitet

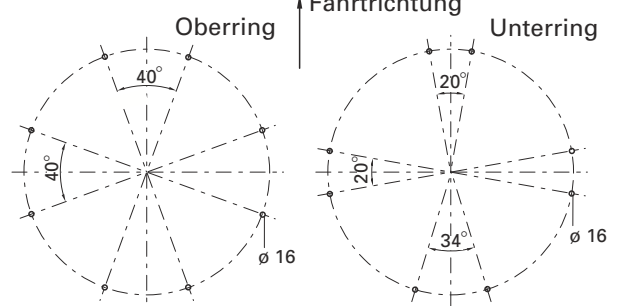
## Lieferumfang

- Standard / wartungsarm
- gebohrt / ungebohrt
- grundiert

### Bohrbild 1



### Bohrbild 2



## Auswahltabelle / lieferbare Ausführungen

Artikel- Nummer	Zulässige Axiallast (kN)	A (mm)	B (mm)	C (mm)	D (mm)	E (mm)	F (mm)	d (mm)	G (mm)	H (mm)	Gewicht (ca. kg)	WA	Bohrbild- Nummer
KLK HE 4	30	685	700	588	567	657	671		9	80	32.0	Standard	ungebohrt
KLK HE 5	50	880	895	783	762	852	866	16	9	80	43.0	Standard	2
KLK HE 6-1000	60	1000	1015	903	882	972	986		9	80	48.0	Standard	ungebohrt
<b>KLK HE 6</b>	<b>65</b>	<b>1090</b>	<b>1105</b>	<b>993</b>	<b>972</b>	<b>1060</b>	<b>1074</b>	<b>18</b>	<b>9</b>	<b>80</b>	<b>52.0</b>	<b>Standard</b>	<b>1</b>
KLK HE 12-1000	70	1000	1011	886	859	960	974		10	90	63.0	Standard	ungebohrt
KLK HE 12-1000 W	70	1000	1008	877	846	960	974		10	90	65.0	wartungsarm	ungebohrt
KLK HE 12	80	1100	1111	986	959	1060	1074	18	10	90	69.0	Standard	1
KLK HE 12 W	80	1100	1108	977	946	1060	1074	18	10	90	72.0	wartungsarm	1
KLK HE 18-1000	80	1000	1011	886	859	960	974		10	90	63.0	Standard	ungebohrt
KLK HE 18-1000 W	80	1000	1008	877	846	960	974		10	90	65.0	wartungsarm	ungebohrt
KLK HE 18	100	1100	1111	986	959	1060	1074	18	10	90	69.0	Standard	1
KLK HE 18 W	100	1100	1108	977	946	1060	1074	18	10	90	72.0	wartungsarm	1
KLK HE 1000-22	100	1000	1011	886	859	960	974		10	90	63.0	Standard	ungebohrt
KLK HE 1000-22 W	100	1000	1008	877	846	960	974		10	90	65.0	wartungsarm	ungebohrt
KLK HE 1100-22	120	1100	1111	986	959	1060	1074	18	10	90	69.0	Standard	1
KLK HE 1100-22 W	120	1100	1108	977	946	1060	1074	18	10	90	72.0	wartungsarm	1
KLK SO 1000-24	120	987	1000	871	844	952	966		10	90	72.0	Standard	ungebohrt
KLK SO 1000-24 W	120	987	1000	871	844	952	966		10	90	73.0	wartungsarm	ungebohrt
KLK HE 1200-22	130	1200	1211	1086	1059	1160	1174	18	10	90	76.0	Standard	1
KLK HE 1200-22 W	130	1200	1208	1077	1046	1160	1174	18	10	90	80.0	wartungsarm	1
KLK HE 1300-22	140	1300	1311	1186	1159	1260	1274		10	90	84.0	Standard	ungebohrt
KLK HE 1300-22 W	140	1300	1308	1177	1146	1260	1274		10	90	89.0	wartungsarm	ungebohrt
KLK SO 1100-24	160	1095	1108	979	952	1060	1074	18	10	90	82.0	Standard	1
KLK SO 1100-24 W	160	1095	1108	979	952	1060	1074	18	10	90	83.0	wartungsarm	1

## Erläuterungen:

WA / Wartung